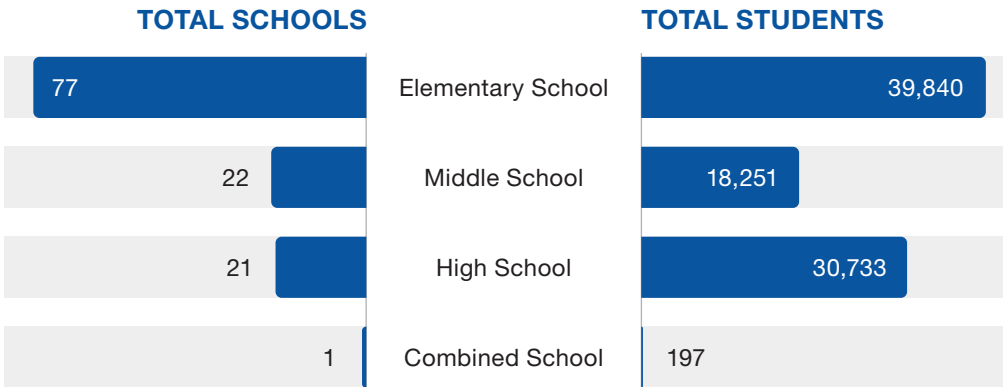


# NEVADA



## 89,166 TOTAL STUDENTS SERVED

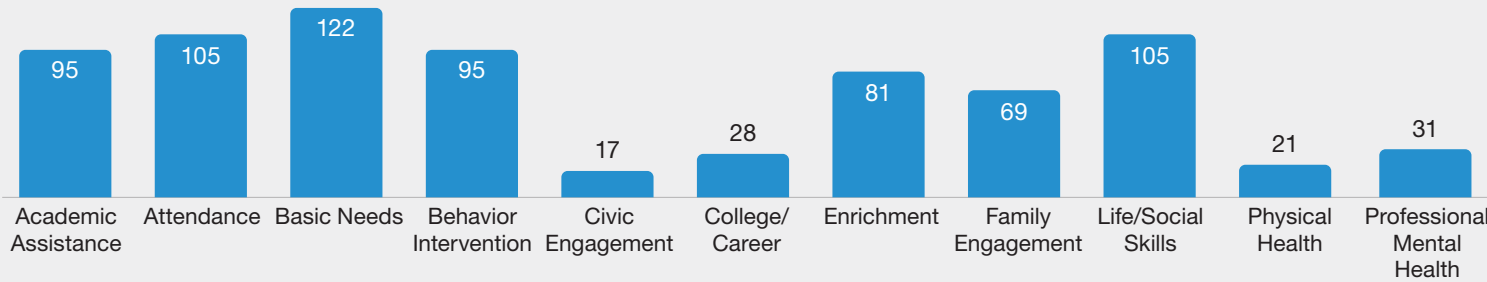
Communities In Schools® (CIS®) brings the power of caring adults and community resources into **122** sites to directly case manage **7,013** students and provide integrated supports to an additional **82,153** students in the state of Nevada.



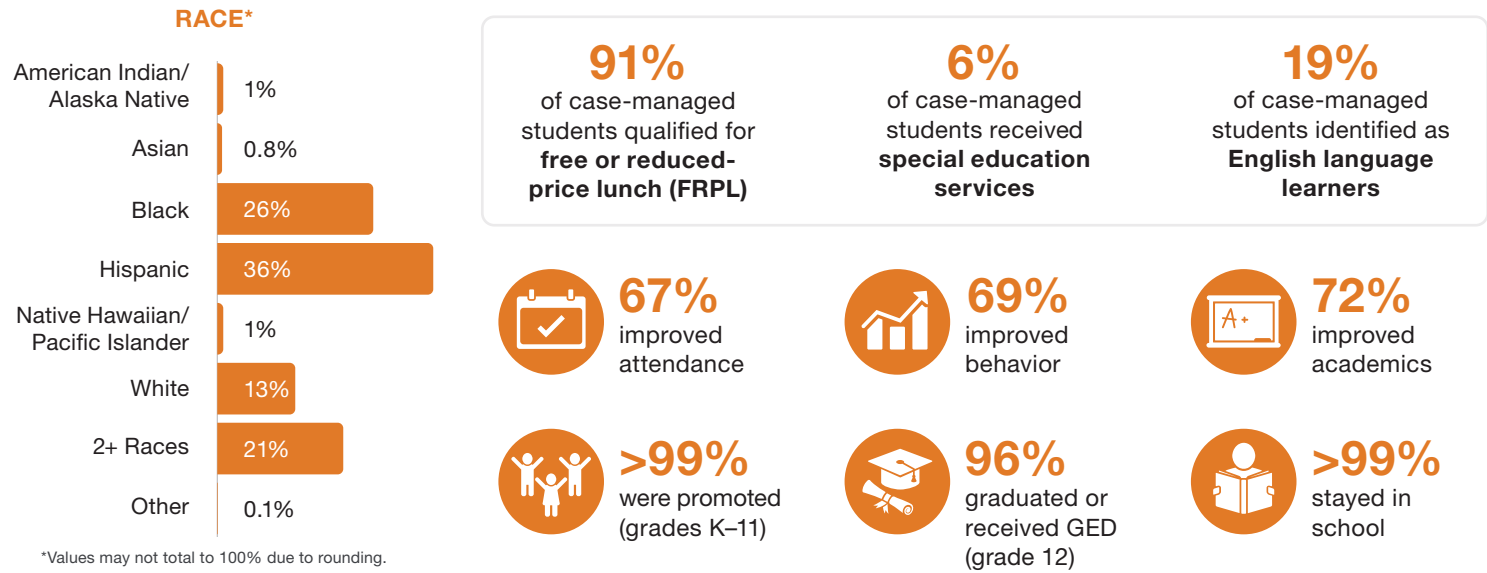
An additional 145 students were served at 1 community-based site.



### TOTAL SITES PROVIDING SUPPORTS BY CATEGORY



### OUR 7,013 CASE-MANAGED STUDENTS



\*Values may not total to 100% due to rounding.