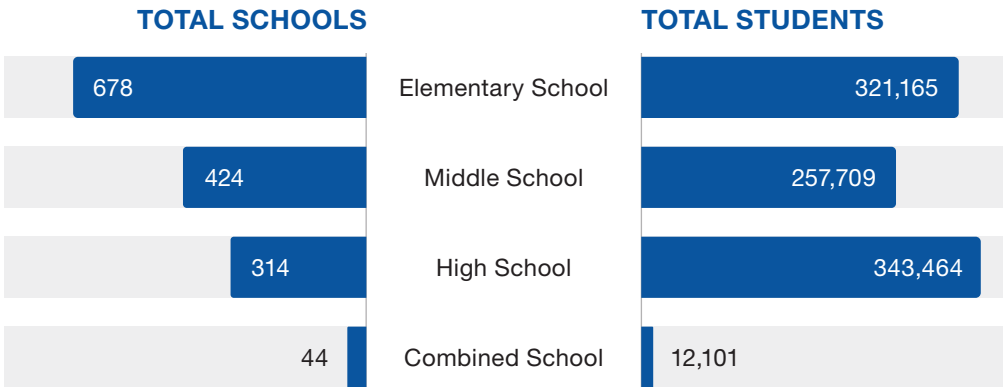


971,201

TOTAL STUDENTS SERVED

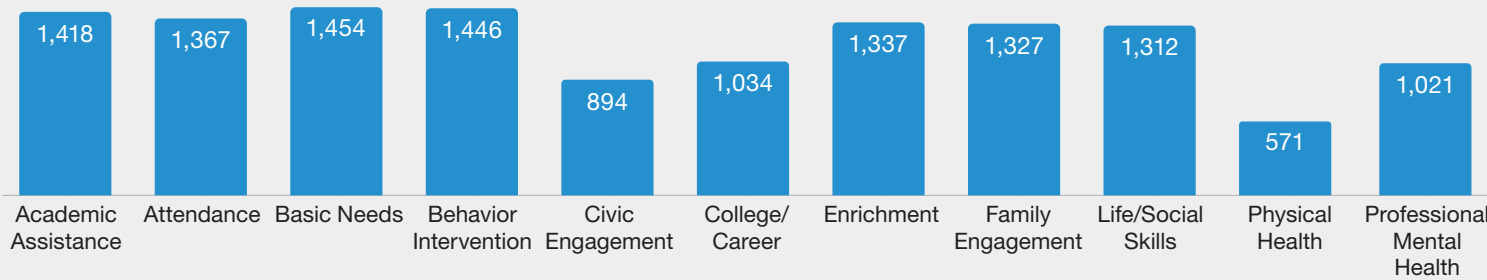
Communities In Schools® (CIS®) brings the power of caring adults and community resources into 1,518 sites to directly case manage 123,754 students and provide integrated supports to an additional 847,447 students in the state of Texas.



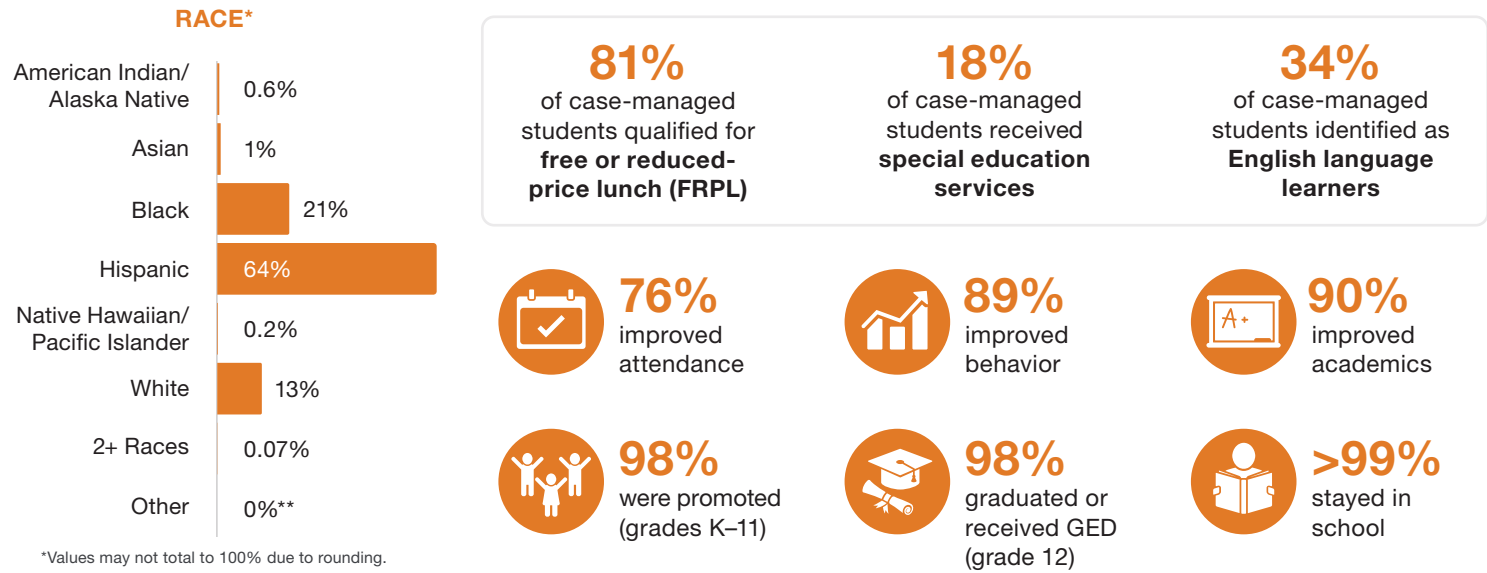
An additional 36,762 students were served at 14 college sites, 10 pre-kindergarten sites, 5 secondary sites, and 29 community-based sites.



TOTAL SITES PROVIDING SUPPORTS BY CATEGORY



OUR 123,754 CASE-MANAGED STUDENTS



*Values may not total to 100% due to rounding.
**No students reported.